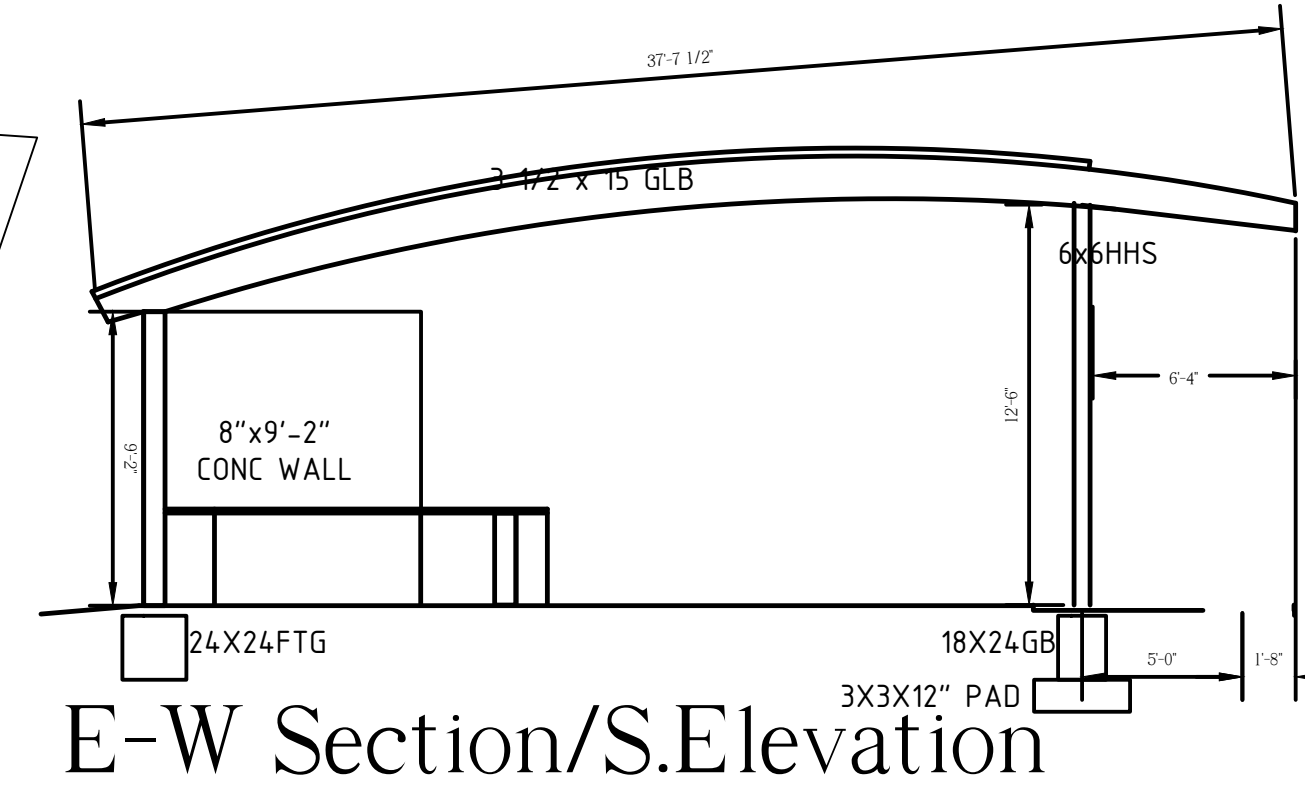




ANDY JACKSON AIRPARK - CRESTLINE SOARING SOCIETY

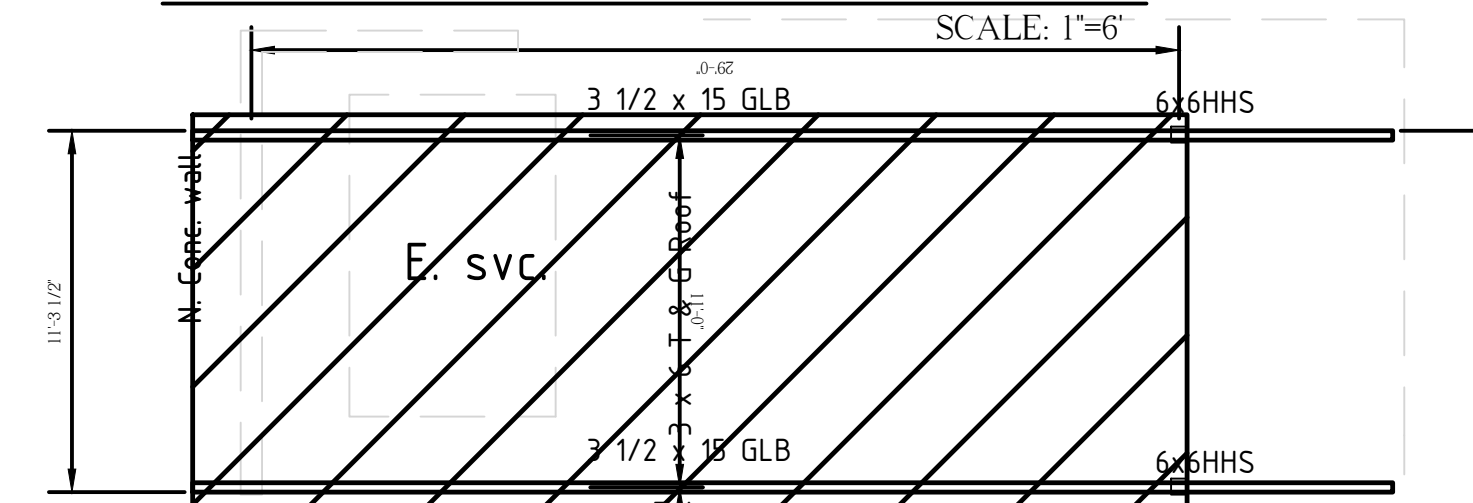
Perspective View

NTS



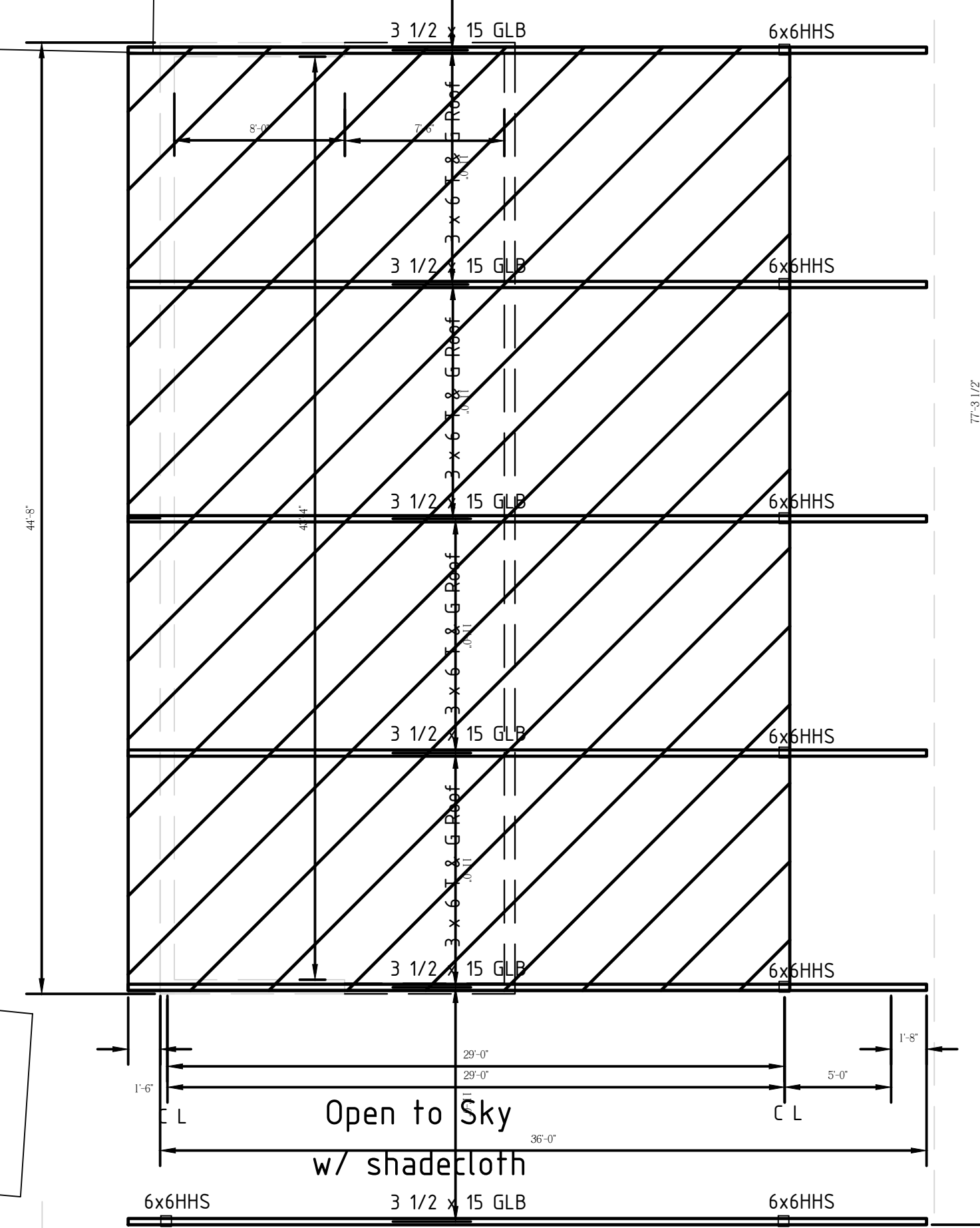
E-W Section/S.Elevation

SCALE: 1"=6'



Open to Sky
w/ shadecloth

E. Stairs

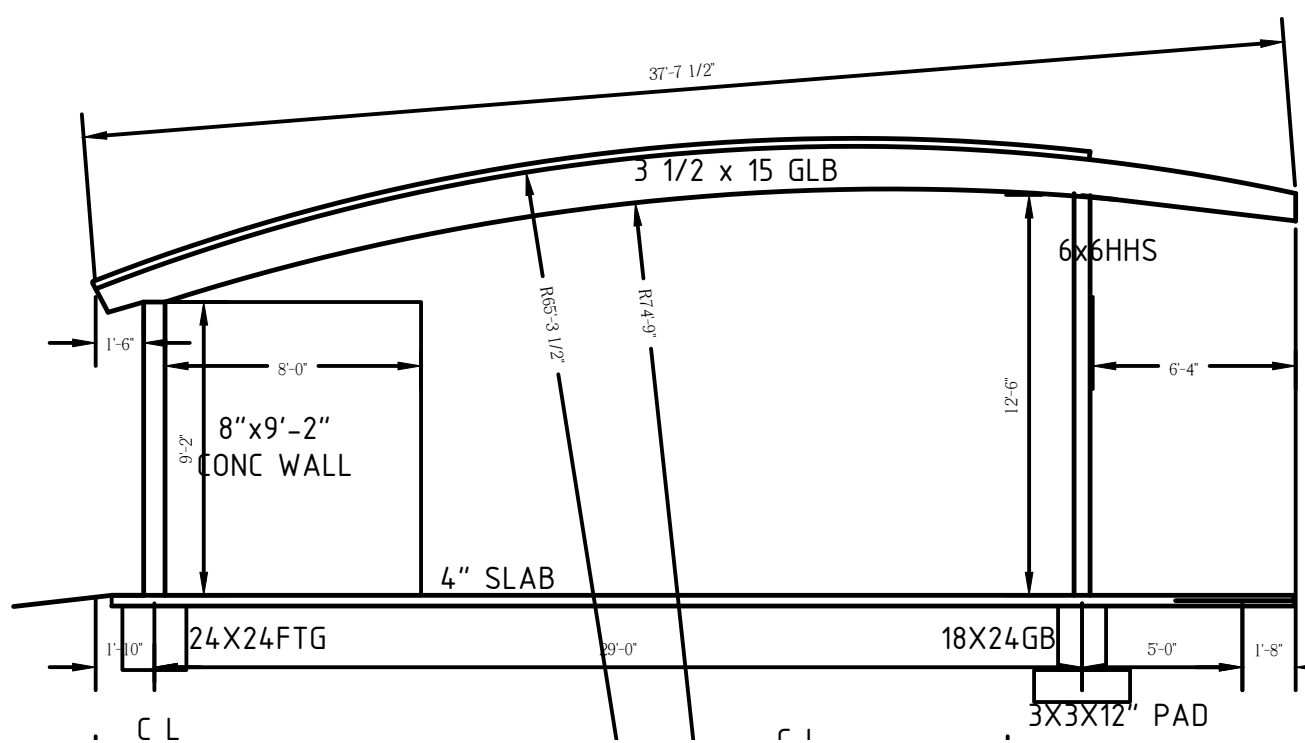


Open to Sky
w/ shadecloth

E. Slope

Roof Framing/Roof Plan

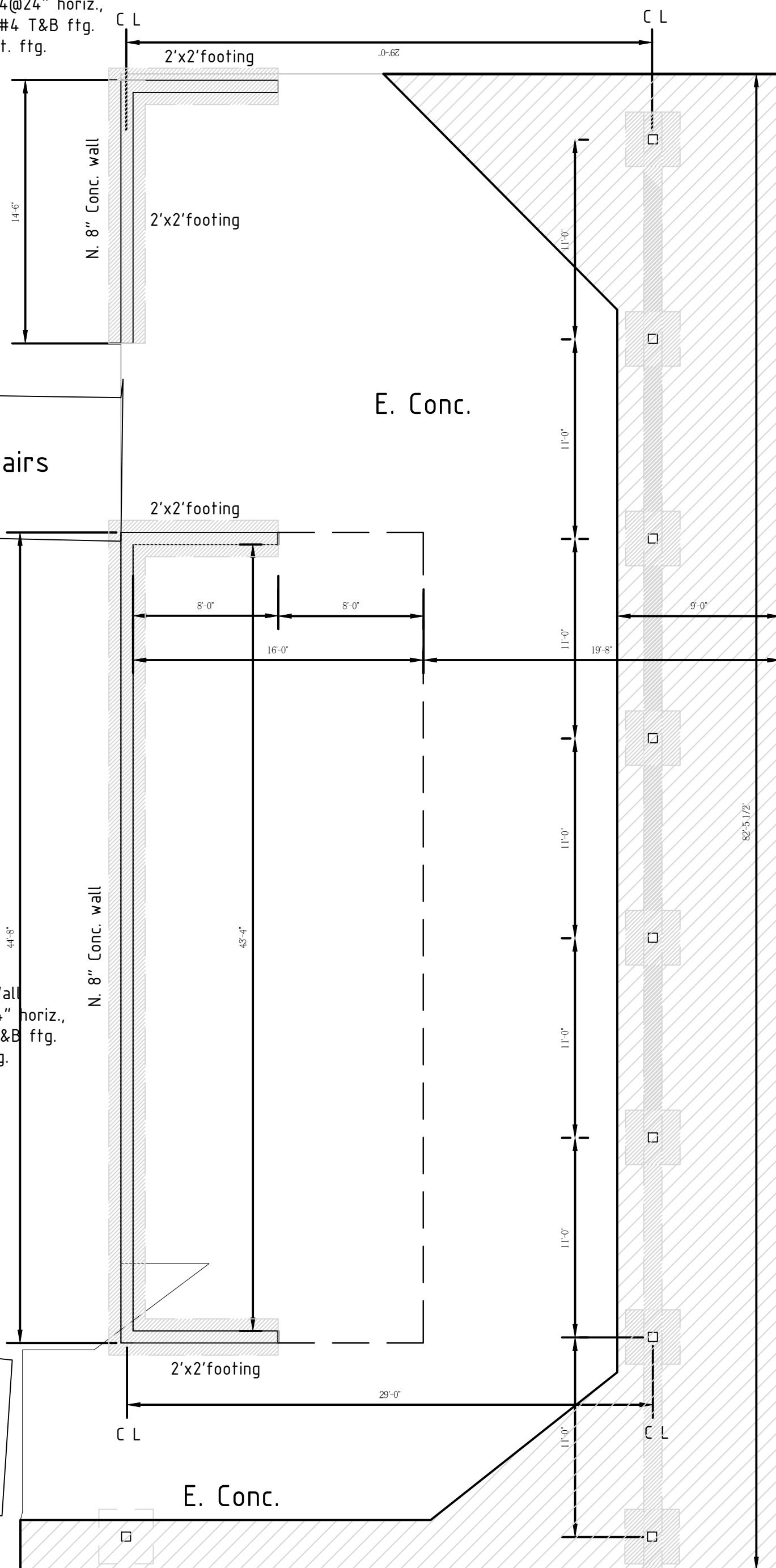
SCALE: 1"=6'



E-W Section/S.Elevation

SCALE: 1"=6'

8" x 9" - 2" Concrete Wall
w/HGLB beam seat, #4@24" horiz.,
#6@12" GR60 vert., 2-#4 T&B ffg.
in 24" x 24" cont. ffg.



Foundation Plan

SCALE: 1"=6'

6x6x1/2" HHS TS column
3'x3'x12" pad w/#5@12" E.W.

6x6x1/2" HHS TS column
3'x3'x12" pad w/#5@12" E.W.

6x6x1/2" HHS TS column
3'x3'x12" pad w/#5@12" E.W.

6x6x1/2" HHS TS column
3'x3'x12" pad w/#5@12" E.W.

18" x 24" GB continuous
w/2#6 gr60 T&B, #3ties@12"
& 3'x3' pads, #5@12" EW

LZ

6x6x1/2" HHS TS column
3'x3'x12" pad w/#5@12" E.W.

6x6x1/2" HHS TS column
3'x3'x12" pad w/#5@12" E.W.

6x6x1/2" HHS TS column
3'x3'x12" pad w/#5@12" E.W.

6x6x1/2" HHS TS column
3'x3'x12" pad w/#5@12" E.W.

6x6x1/2" HHS TS column
3'x3'x12" pad w/#5@12" E.W.

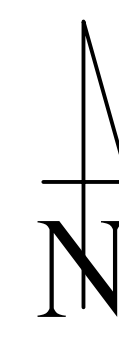
Parking

8" x 9" - 2" Concrete Wall
w/HGLB beam seat, #4@24" horiz.,
#6@12" GR60 vert., 2-#4 T&B ffg.
in 24" x 24" cont. ffg.

E. Stairs

Parking

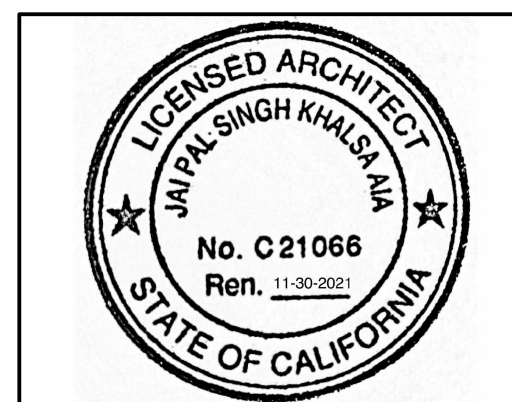
E. Stairs



TKG WEST INC.
ARCHITECTURE - PRESERVATION - INNOVATION
8178 Aster Road
Oak Hills, CA 92344
O 310.409.6040 F 800.788.8260
jaipal@tkgwest.com

Andy Jackson Airpark
5500 Ben Canyon Road
San Bernardino, CA 92407

SURVEY/AS-BUILTS 12-2020
SCHEMATIC PHASE 1-27-21, 2-25-21
DD
WD/STRUC. 3-11-21, rev 4 12 21
CD/PLAN CHECK
PLAN CHECK
PERMIT
REVISIONS



Plan V.3.2

